



A U T O L O G ® Cathodic Protection GSM-RTU

S O P H I S T I C A T E D ® A U T O M A T I O N

Special design for cathodic protection rectifier monitoring.

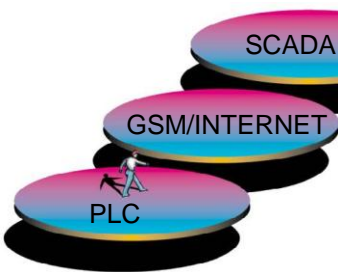


3- way isolation of analog inputs

High temperature operation

Embedded HMI operator panel

Supports AutoLog® ControlMan™ Cloud SCADA

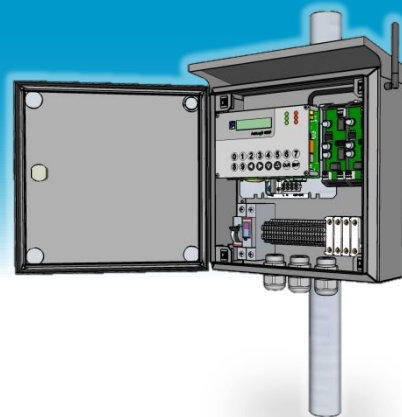


PLCs since 1976

Introduction

AutoLog CP GSM-RTU gives compact and high specification solution for the remote monitoring of the healthiness of the pipeline's CP rectifiers.

AutoLog CP GSM-RTU is based on rock solid AutoLog technology. FF-Automation has manufactured AutoLog automation products in Finland since 1976. AutoLog GSM-RTU devices and cathodic protection are our main business areas.



CP GSM-RTU Specifications

- **Enclosure:** Stainless steel IP65 with optional sunshade
- **Mounting:** side of pole or wall installation kit.
- **Power input:** 230 VAC, optional 115 VAC or others
- **GSM / GPRS:** Embedded 850/900/1800MHz modem with outdoor antenna
- **Serial port #2 connectivity:** Modbus RTU master / slave, Modbus TCP or RS-485 requires optional plugin module.
- **HMI (I²C port):** Characted based LCD, indication LEDs and keypad
- **Clock and calendar (RTC):** Build-in
- **Memory:** Program-Flash, Data-RAM
- **Back-up battery for RAM and RTC:** Yes
- **Support for wireless sensors:** Yes (Needs optional WSN master module)
- **Supplementary:** Fuses, switches , screw terminal block

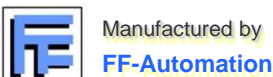
On-board I/O

Analog Inputs	GSM-8 type has 2 AI GSM-16 type has up to 8 AI 0-100V (CP rectifier voltage) default 1 0-50mV (CP current measurement over shunt resistor) default 2 0-4000mV (CP reference potential) Uses Isolated AutoLog Any to 4..20mA transducers. See separate datasheet!
Digital Inputs	GSM-8 and GSM-16 have 4 DI, 24VDC, max 8mA, opto-isolated, PNP
Digital Outputs	GSM-8 has 2 DO, GSM-16 has 0 DO. 24 VDC, max 2A, NPN
Relay Outputs	GSM-8 has 2 RO, GSM-16 has 4 RO 5A /250VAC 1A/30VDC

Environmental and size

Storage temperature	-40 ~ +80 °C
Operating temperature	-30 ~ +70 °C
Relative humidity	95%, non-condensing
EMC	Immunity according to EN50082-2 & EN50082-1 Emissions according to EN50081-1 & EN50081-2
Enclosure	IP65 stainless steel
Dimensions (W x H x D)	300 x 300 x 150 mm Without sunshade
Weight	About 7 kg
Mounting	Side of pole, wall

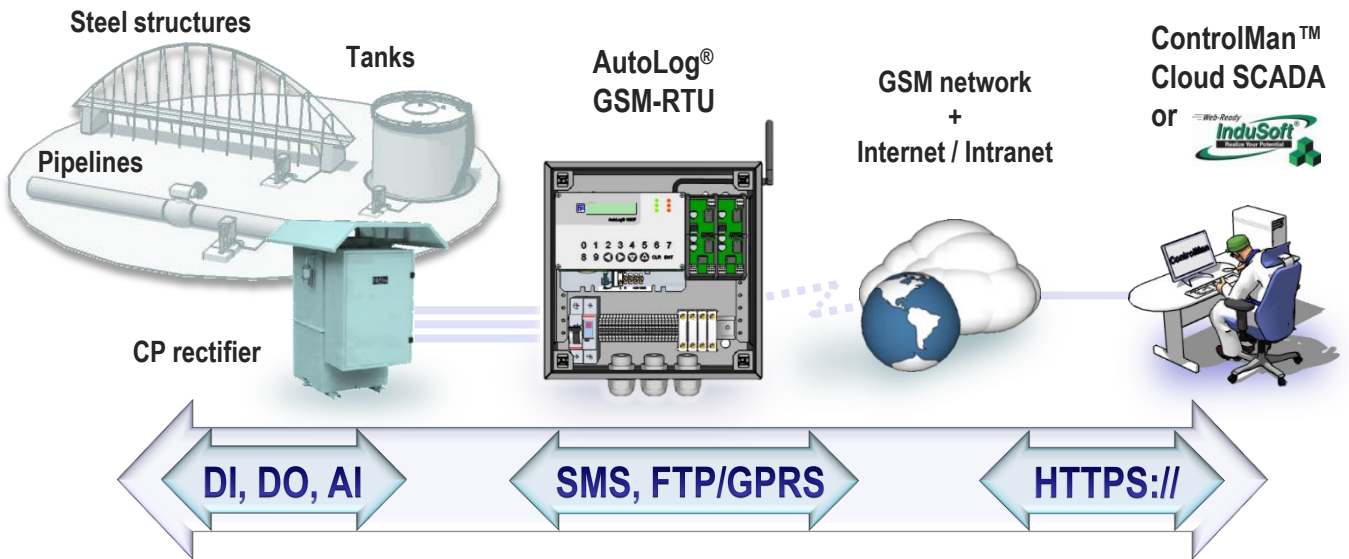
AutoLog® CP GSM-RTU



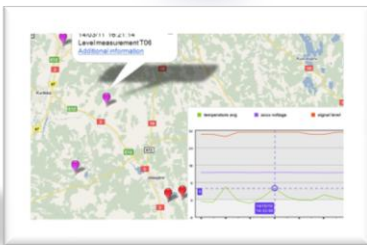
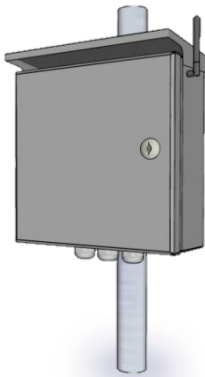
THE AUTOLOG® FAMILY
 AUTOLOG®PLC AUTOLOG®GSM AUTOLOG®OEM
 AUTOLOG®RTU AUTOLOG®FCS AUTOLOG®HMI



A U T O L O G ® Cathodic Protection GSM-RTU



Main Features:



- DC voltage and current measurements from Cathodic Protection transformer rectifier + opt. pipe-to-soil measurement. All inputs has 3-way isolation 1500 VDC.
- AC presence detection (Optional), Door alarm (Optional).
- IP65 Stainless steel enclosure with optional sunshade.
- Rock solid GSM communication using (GPRS and SMS).
- HMI allows local monitoring of CP parameters etc.
- Over 1.000 similar GSM-RTU and ControlMan installations.
- ControlMan Cloud SCADA receives and stores data to SQL database. Hosted server system has 24/7/365 maintenance and data backup plan and guaranteed availability ratio.
- ControlMan shows CP site map locations, measurements, alarms, trends, reports etc. via secure Internet connection to multiple simultaneous users.
- ControlMan can forward alarms and reports to mobile phones and e-mails.
- Complete system maintenance (GSM-RTU and SCADA) can be done remotely over Internet- and GSM networks.



WWW.FF-AUTOMATION.COM



FF-AUTOMATION
 Eräkuja 2, 01600 Vantaa, Finland
 tel. +358 10 2190 500
 fax +358 3 5846 711
 e-mail: info@ff-automation.com
 Web: www.ff-automation.com