

A U T O L O G ® P u m p S t a t i o n S y s t e m
S O P H I S T I C A T E D ® A U T O M A T I O N

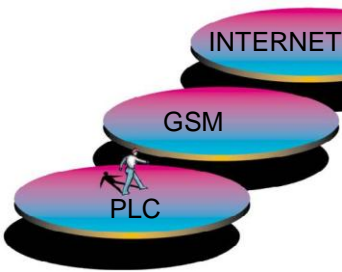
AutoLog Pump-RTUs communicate using GSM / GPRS network.



Alarms and maintenance reports can be forwarded to GSM phone or e-mail.



ControlMan Cloud SCADA service works everywhere!

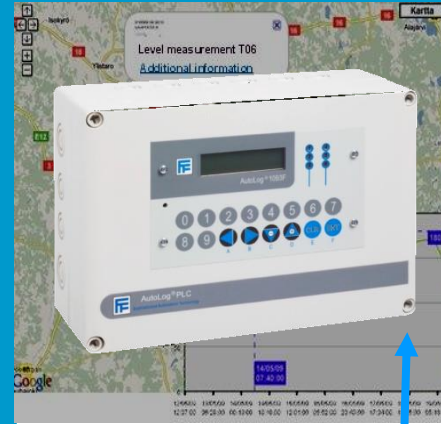


Automation Manufacturing

1976

AutoLog® Pump Stations System is complete automation and remote maintenance solution for wastewater pump stations.

AutoLog® Pump-RTU controls up to four sewage pumps to maintain water level within normal limits. System detects variety of abnormal pump station conditions and sends alarm messages wirelessly to AutoLog ControlMan Cloud SCADA Service.



AutoLog® Pump-RTU

AutoLog® Pump Station System

Pump efficiency factor is calculated in Pump-RTU. Decreasing efficiency factor can be seen in the SCADA's trend diagrams. Repair actions can started before costly failure happens.

Pumps operation times and -counts can be seen in SCADA's bargraphs. Abnormal situations can be detected. Using pump's power consumption factor, approximate power consumption and energy costs can be calculated.

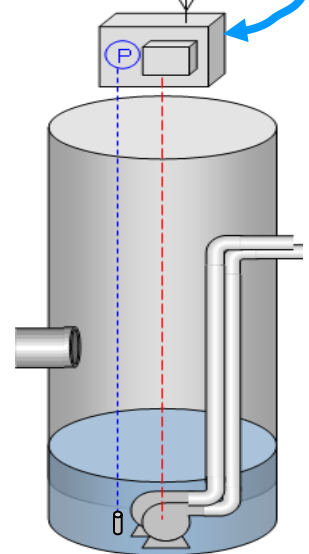
Energy consumption can be calculated accurately if the pump station is equipped with energy meter with pulse output or modbus interface. Again bargraphs can be seen in SCADA.

Alarms are send immediately to SCADA and can be forwarded automatically to service man's GSM-phone or e-mail or other maintenance work system.

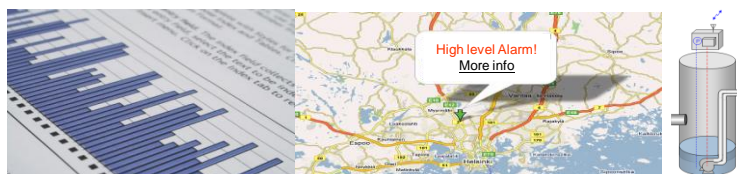
AutoLog GSM-RTUs are **remotely programmable and configurable**. User can login to the ControlMan SCADA service using normal Web browser to see alarm, diagrams, trends, process views, print reports etc. from any PC or from capable mobile phone.

From the **pumping station HMI display**, service man can check water level, pumps operating counts & -times and possible abnormal situations. Service man can set pumps start / stop / alarms levels from the HMI or SCADA (web browser).

Communicates using GSM / GPRS networks. Also WLAN / Radio. Ask more!



The previous pump can be controlled to stop pumping if the water level exceeds the overflow level limit.



AUTOLOG® Pump Station Monitoring

AutoLog® ControlMan

AutoLog® ControlMan is Web SCADA service for remote target supervision and control. Server is hosted (24/7/365) by Verio, which is awarded as most reliable Internet hosting company e.g. in year 2010. Customer doesn't need own server PC or maintenance personnel.

AutoLog® ControlMan collects measurement and status data from remote targets via GSM / GPRS network. Data is stored to ControlMan's database.

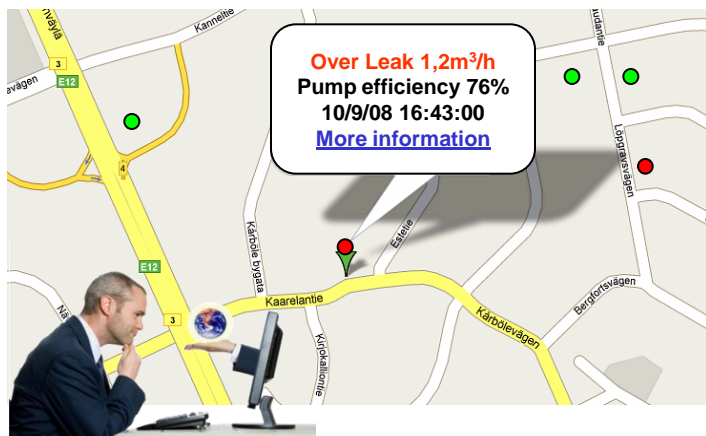
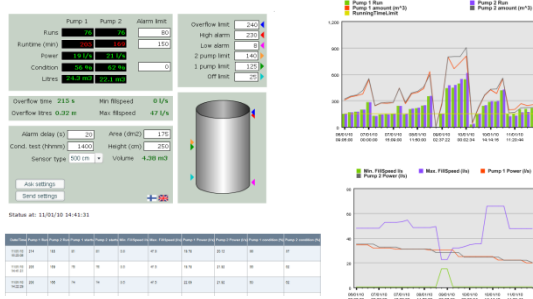
Collected data can be seen using normal web browser. User(s) just logs in to the secure ControlMan web pages and after few clicks user can see status of their remote targets, print monthly reports, analyze productivity, check maintenance needs, browse alarm views, trend views, process picture views, target control views, report views, trouble ticket views etc.

Full control, anytime - anywhere !

Instant alarms directly to right persons. AutoLog® ControlMan can send alarm messages immediately to service men's GSM phones and/or e-mails and reach the person whether he is behind his desk or on the field.

AutoLog® ControlMan has all the information about the configured users, user groups, GSM-RTUs, I/O points, analog input scalings, allowed phone numbers, etc. Authorized user can maintain system remotely using the web browser.

Read more from our web page or ask more information!



Features:

Map view

- Pump stations status can be seen on the dynamic map

Alarm view

- All active alarms in the same view, pump station alarm views
- Alarm acknowledgement
- Alarm history reports
- Intelligent alarm forwarding to on duty service man's gsm or e-mail

Baragraph- and trend diagrams

- Fault diagnostics and reports
- Day min/max values
- Hourly averages
- Pump efficiency bargraph curve
- Pumps operating counts & times day, week, month, year diagrams
- Power consumption day, week, month, year diagrams
- Flow rates day, week, month, year diagrams
- All information can be read to EXCEL for own reports etc.

Configuration parameters

- Can be set remotely using web browser or GSM phone
- Pumps start / stop / alarm levels, alarm delays
- Service men's gsm phone numbers and e-mail
- Fault diagnostic alarm setpoints and energy consumption factors
- Continuous pumping alarm time
- Max pumping count / day alarm limit

Ask more information from
AutoLog® Pump Station System
Features!



WWW.FF-AUTOMATION.COM

FF-Automation has delivered
Over 5000 Pump-RTUs to Grundfos!



FF-AUTOMATION
Eräkuja 2, 01600 Vantaa, Finland
tel. +358 10 2190 500
fax +358 3 5846 711
e-mail: info@ff-automation.com
Web: www.ff-automation.com